



---

A MULTI-DISCIPLINED ENGINEERING AND FABRICATION PARTNER

# CAPABILITY STATEMENT

NOVEMBER 2023

# ABOUT CO-CREATE

Co-Create Solutions are a multi-disciplined engineering and fabrication partner, delivering metalwork services to a range of industries.

We are based in South Australia and have over 25 years' experience in metalwork fabrication. Our installation crews are trade certified, hold structural steel welding certifications, and can handle a variety of projects, large or small. We always strive to provide the best outcome and exceed project expectations.

Through our innovative and collaborative approach, we provide incredible end-to-end services from consultancy to site works, ensuring the best outcome for every build.

co.create  
solutions



Fabrication works  
Co-Create Solutions Factory  
Lonsdale, SA

# WHY WORK WITH US

Co-Create Solutions have built a reputation around quality, working on South Australian landmark building sites for decades.

Our fully trained workforce specialises in delivering metalwork services across a wide range of industries including construction, industrial, and infrastructure, projects.

Our group of experienced drafters, project managers, supervisors, and fabricators believe in meeting the challenge and finding a better approach to designing, engineering, and building your project.

With ISO certifications in quality, environment, and health and safety management, a digital 3D engineering workflow, and advanced procedures for efficient turn-key delivery, you can rely on our multidisciplined team to achieve project success.

co.create  
solutions

kennett. EST 1914

HANSEN YUNCKEN



aurecon



Built.



Commercial & General

SARAH

CHAPPELL  
BUILDERS



BADGE

# COMPETENCIES AND PROJECTS

We add value to your project through the knowledge, experience, and attitudes of our people.

Our fully trained workforce specialises in the manufacture of metal products which are installed by our competent tradespeople.

Our project experience covers everything from cladding, balustrades, and stairways to platform structures, blast screens, custom pipework, and pipeline remediation.

You can be assured knowing that we are committed to the continuous improvement of our quality, health and safety, and environmental policies and procedures to give our clients absolute confidence in our solutions.

We are in our third year of ISO certification in:

- ISO9001:2015 Quality Management
- ISO14001:2015 Environmental Management
- ISO45001:2018 OH&S Management

No matter the challenge, Co-Create will help you to achieve project success!

**co.create**  
SOLUTIONS

## Licenses and Qualifications

- BLD256994
  - Metal Fabricated Product Installation
  - Structural Steel Erection
  - Civil Construction Associated with Marine Structures
- Trade-qualified Welders
- EWP Operators inc. >11m Boom
- Working at Heights
- First Aid and CPR
- White Cards
- Working with Children and Police Checks

## Certifications

- ISO9001 Quality Management Systems
- ISO14001 Environmental Management Systems
- ISO45001 OH&S Management Systems



## Plant and Equipment

- Brake Press
- Guillotine
- Cold Saw
- MIG Welders
- HF TIG Welders
- Tube Bender
- Site Trucks
- Mine-Equipped Site Vehicles
- Mobile Welding Plants

## Insurances

- \$20m public liability
- Return to Work SA Workers Compensation

## Recent Projects

### Port Augusta Woomera Pipeline

- Year: 2023
- Client: DDR/Aurecon
- Value: \$3.5m
- Scope: Supply and installation of 8,000x steel pipeline collars

### SAAB Australia Expansion

- Year: 2023
- Client: Hansen Yuncken
- Value: \$0.8m
- Scope: Design and Construct
  - 200m<sup>2</sup> of feature fabricated stainless steel cladding
  - Feature Glass and metal (stainless steel and perforated aluminium) balustrade to a number of stairs
  - Feature fabricated transformer enclosures

### Nazareth Senior College

- Year: 2023
- Client: Kennett Builders
- Value: \$0.8m
- Scope: Design and Construct
  - 750m<sup>2</sup> of feature fabricated perforated panels to the building envelope
  - Feature Glass and metal (stainless steel and perforated aluminium) balustrade to a number of stairs

### Morphetville Park Racecourse

- Year: 2023
- Client: Kennett Builders
- Value: \$0.7m
- Scope: Design and Construct
  - 350m<sup>2</sup> of feature fabricated perforated panels to the building envelope
  - Feature Glass and metal (stainless steel) balustrade to the function deck
  - Stainless steel and brass handrails to a number of stairs



# SERVICE OFFERING

Co-Create Solutions' project management processes seamlessly link fabrication and construction to retain flexibility in completing project schedules and meeting project costs.

Our overall capabilities cover work requirements for both new infrastructure and existing infrastructure, as well as temporary works structures. We have experience in a range of infrastructure projects including water treatment facilities, water pipelines, bridges, wharves, jetties, and pontoons.

At Co-Create, our capabilities include:

- ✓ Design and Engineering
- ✓ Specialised Fabrication
- ✓ Protective Coatings
- ✓ Site Installation

co.create  
SOLUTIONS



Delivery of fabricated works for installation  
Memorial Drive Tennis Centre Stage 2 Works, War Memorial Drive, ADELAIDE SA  
Client: Kennett Builders

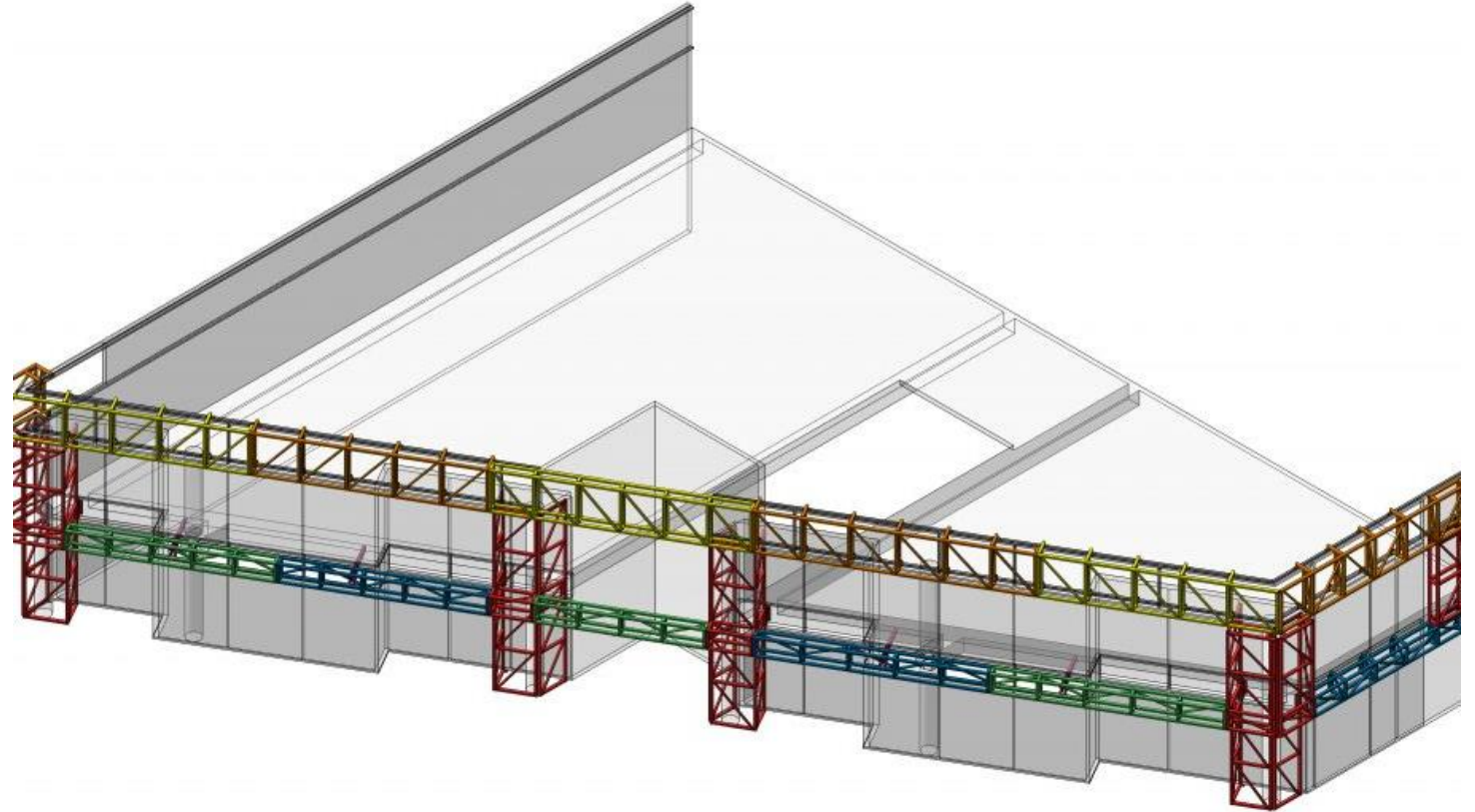
# DESIGN AND DRAFTING

At Co-Create Solutions, our team designs and builds for the future.

With extensive knowledge in design for manufacture and assembly, our multi-disciplined team can provide innovative solutions for fabrication across construction, industrials, infrastructure, and site maintenance that will fulfil your design & engineering needs.

We work with 3D concepts to fully develop designs using survey, mechanical, BIM, and point cloud datasets. Our systems include Solidworks, AutoCAD, and Agisoft Metashape, with capability to work from initial concepts through to finished and installed products.

co.create  
solutions



3D model of building façade refurbishment works  
Glen Osmond Road, FULLARTON SA  
Client: FDC



# SPECIALISED FABRICATION

Co-Create Solutions are an established engineering and fabrication contractor with wealth of experience in delivering project success across a range of construction, industrial, and infrastructure projects.

Our highly skilled team have the comprehensive capability to support projects of all shapes and sizes, and we can provide an end-to-end fabrication service including welding, NDT and inspection, and specialised coatings, and freight transport to site.

With our ISO9001-certified quality management systems, you can be confident you are receiving compliant work of the highest standard.

co.create  
SOLUTIONS



Waterplay infrastructure  
Gateway Shopping Centre Darwin, YARRAWONGA NT  
Client: Hydrilla

# SITE INSTALLATION

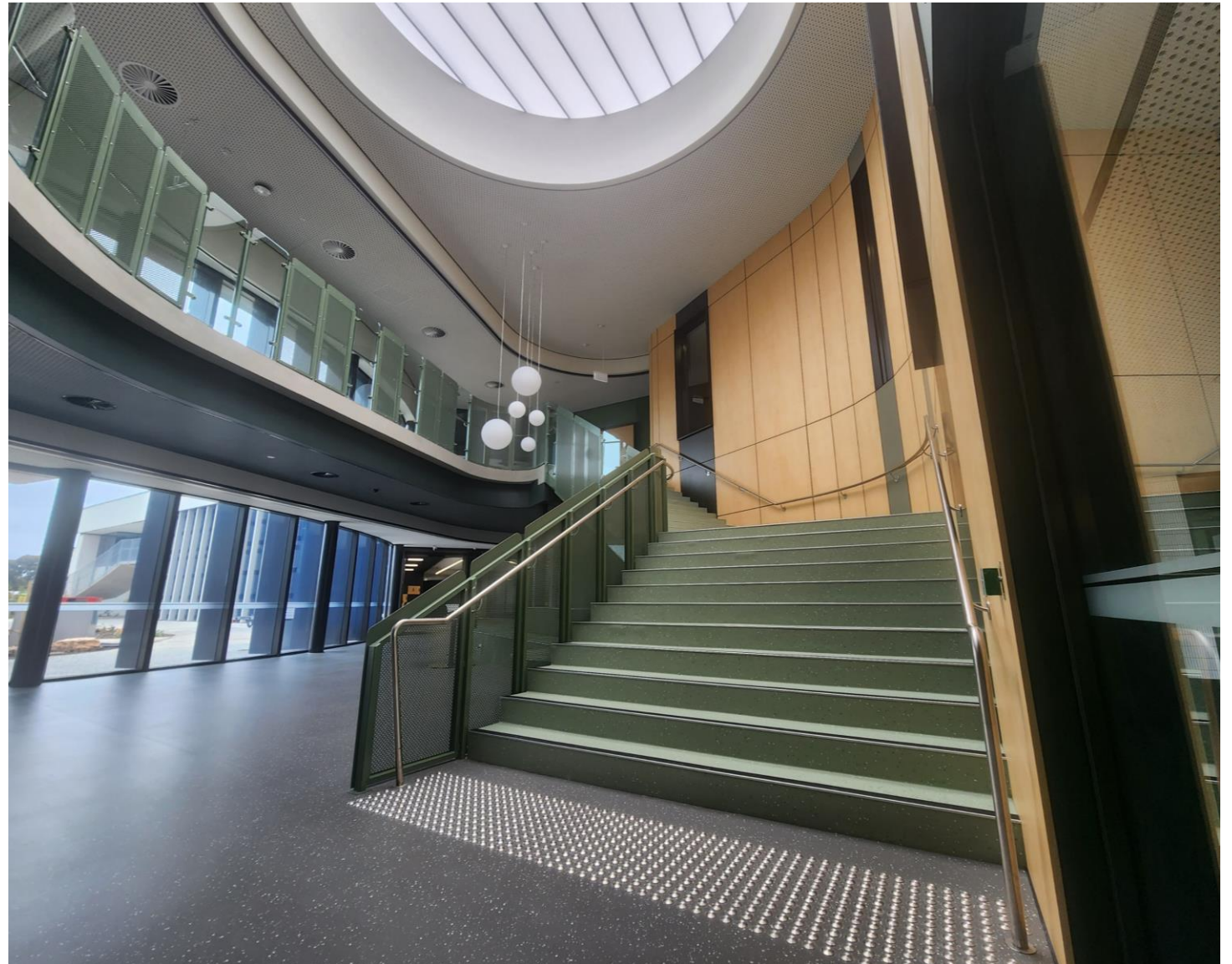
Client trust us. With expertise across multiple disciplines, we work to construct and install complex projects safely, reliably, and to a high standard.

Our installation crews are trade certified, hold structural steel welding certifications, carry high-risk licenses for EWP's and are experienced in the site installation of various fabricated structures, as well as the repair of existing infrastructure.

Working directly with our clients we can provide supervision, trades, access solutions, and inspection to complete your project on time and on budget.

We can also supply cranes, EWPs, scaffolding and challenging freight solutions to provide the project support you are looking for.

co.create  
SOLUTIONS



Stair 3 installation

Nazareth Catholic College: Senior Years (10-12) Kidman Park Campus, 344 Findon Road, KIDMAN PARK SA 5025

Client: Kennett Builders



# INTRODUCING AZURE INTEGRITY

Azure Integrity are a subsidiary of Co-Create Solutions. Azure Integrity are Australian drone data experts, specialising in end-to-end inspection and survey solutions for high-risk and high-volume assets.

Our robotics are operated by highly skilled and experienced remote pilots, and we employ the very best uncrewed solutions to meet our clients' specific requirements with safer, higher quality, and more efficient methods for remote inspection and survey.

Combined with our drone inspection framework, turn-key approach, and gold standard service from consultancy to site-works, we are trusted by major power generation, utility network, mining, oil and gas, and infrastructure clients to provide the absolute best data capture and digital engineering outcomes achievable.

**AZURE**  
INTEGRITY



ARTC bridge and girder inspection (internal and external)  
pitt&sherry  
PORT ADELAIDE SA

# WHY WORK WITH US

We are trusted by major energy, mining, and oil & gas asset owners and operators across Australia to deliver drone data solutions.

At Azure Integrity, we provide reliable and cost-effective solutions for large-scale, high-risk, and complex inspections.

Our experienced teams utilise industry-leading robotics to reduce risk to personnel, to gain rapid access to difficult areas, to improve task cost efficiency, and to capture high quality visual and spatial datasets.

We also have a strategic partnership with Cyberhawk, the world-leader in drone inspection and visual data management, that ensures our clients receive first-class solutions and gold standard service. We deliver their leading asset management software, iHawk, to the Australia and New Zealand markets.

**AZURE**  
INTEGRITY

**SIEMENS** Gamesa  
RENEWABLE ENERGY



Government of South Australia  
Department for Infrastructure  
and Transport

**Downer**  
Relationships creating success

**BMA**  
BHP Billiton Mitsubishi Alliance

**VENA ENERGY**

**ADBRI**

**UGL**

**VITERRA**

**Applus<sup>+</sup>**

**BHP**

SPARK  
NORTH EAST LINK

**ENGIE**

**pitt&sherry**

**WSP**

# co.create<sup>solutions</sup>

---

**ENGINEERING AND FABRICATION PARTNER**

---

Tristan Wright  
Operations Manager  
+61 (0) 455 308 278  
[tristan.w@cocreate.net.au](mailto:tristan.w@cocreate.net.au)

Matthew Warren  
Managing Director  
+61 (0) 405 018 333  
[matt@cocreate.net.au](mailto:matt@cocreate.net.au)  
[matthew.warren@azureintegrity.com](mailto:matthew.warren@azureintegrity.com)

## KEY CONTACTS

# AZURE INTEGRITY

---

**DRONE DATA AND VISUAL INTELLIGENCE SOLUTIONS**

---

Andrew McIntyre  
Operations Manager  
+61 (0) 437 271 164  
[andrew.mcintyre@azureintegrity.com](mailto:andrew.mcintyre@azureintegrity.com)